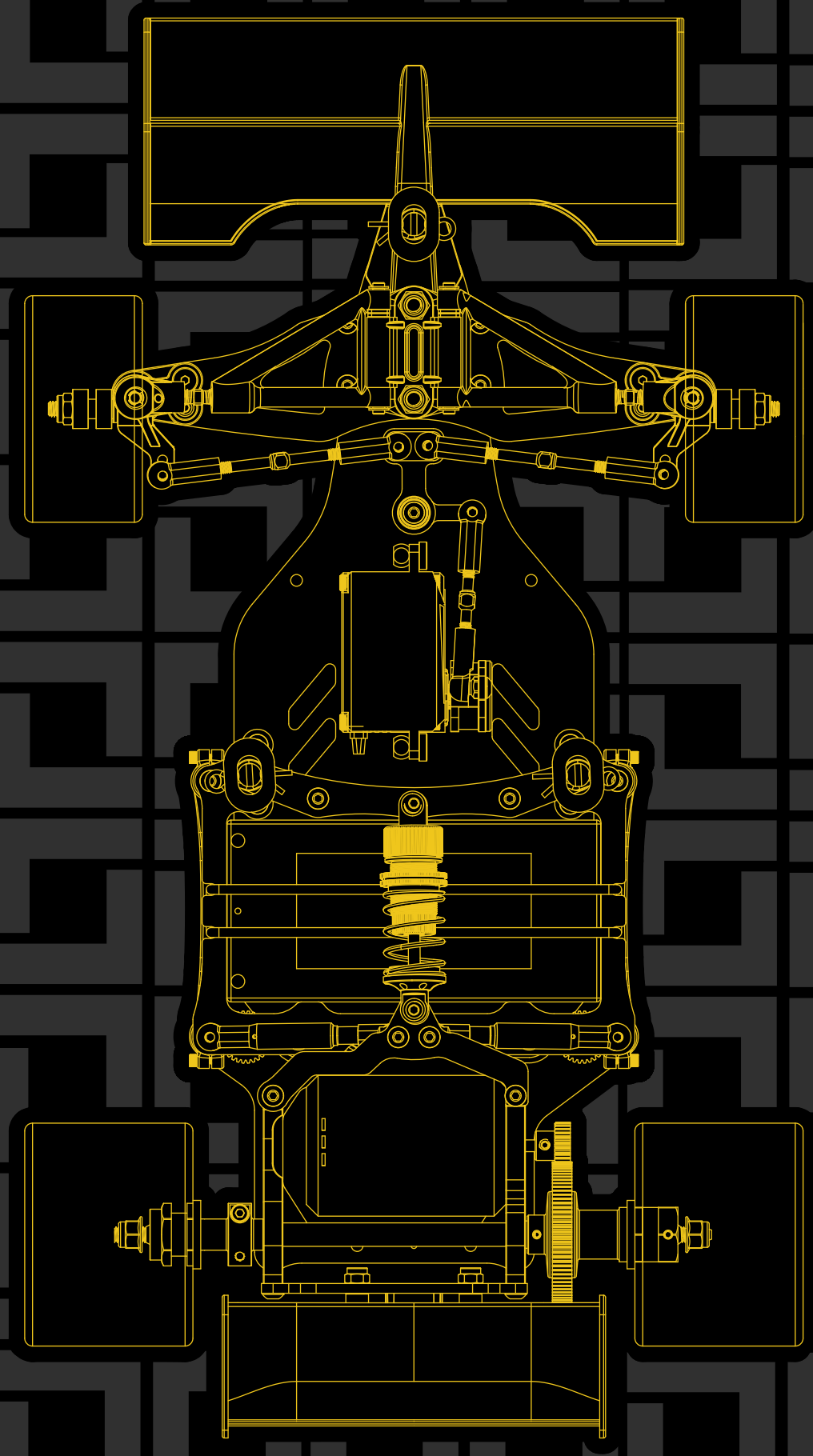




MF-1-200



Thank you for purchasing this TEAMSAXO product. This high performance competition kit has been proudly manufactured by TEAMSAXO World Champion R/C car manufacturer.
Proper assembly of this product will provide fun,safe enjoyment.

PRECAUTIONS FOR SAFE ENJOYMENT OF YOUR R/C CAR

For children under the age of 13, parental guidance is recommended when running.

ASSEMBLY PRECAUTIONS

Do not assemble around small children. The parts can be dangerous if accidentally swallowed.

Check the contents carefully before assembly. Please contact Customer Support if you happen to notice any defective or missing items.

You will find the assembly process much easier by carefully reading through the manual, and familiarizing yourself with the instructions.

Many different tools are required during assembly. For safety purposes, please use suitable tools. Exercise extra caution when using a sharp tool such as a hobby knife.

Many different materials are used for the parts. Use extra care when handling parts with sharp edges, such as machined metal parts.

When cutting plastic parts, watch for any flying parts.

Try to assemble any rotating parts of drivetrain parts as smooth as possible.

Bundle wires neatly away from the ground or any moving drivetrain components. Make sure that all wires are properly connected to prevent shorting.

Unnecessary modifications may be unsafe and hinder performance.

Always paint in a well ventilated area away from flames.

PRECAUTIONS BEFORE RUNNING

Teamsaxo R/C cars are built for competition use, and some models may exceed speeds of 40km per hour. Practice common sense and run the car in open safe places, or R/C car tracks.

Do not run the car on public roads with high amounts of traffic, or in areas that may cause an inconvenience to people in that area.

R/C cars are controlled using radio frequency. In a worst-case scenario, radio interferences may cause loss of control.

If others near you are running R/C cars, confirm that they are not running on the same frequency.

R/C cars do not like water. Avoid running on rainy days, or areas with water puddles. Exposure of the electronics to water may cause loss of control or damage to the electronics.

The drivetrain of an R/C car consists of many moving parts like gears, belts, shafts, and tires. Avoid touching these areas when the battery is connected.

Many parts of an R/C car will become hot after running. Allow the parts to sufficiently cool before conducting any maintenance.

BEGINNING A RUN

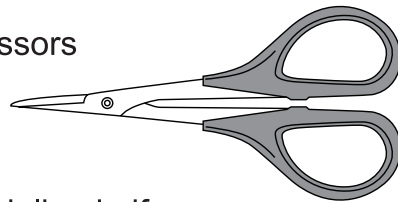
1. Place the R/C car on a stand so the wheels are off the ground.
2. Confirm that the speed controller switch is OFF, and connect the motor and battery.
3. Extend the transmitter antenna and turn the switch ON. (It is unsafe to use a transmitter with low voltage. Make sure that the transmitter batteries are good before running)
4. Turn the speed controller switch ON.

FINISHING A RUN

1. Turn the speed controller switch OFF.
2. Disconnect the battery.
3. Turn the transmitter switch OFF, and retract the antenna.

ASSEMBLING TOOLS REQUIRED (NOT INCLUDED IN KIT)

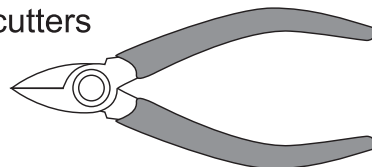
Scissors



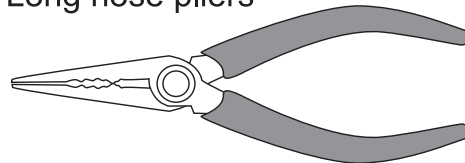
Modeling knife



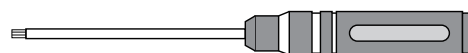
Side cutters



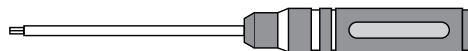
Long nose pliers



Hex wrench (1.5mm)



Hex wrench (2mm)



Tweezers



MF-1-200 CHASSIS SPECIFICATION

Overall Length	: 355mm	Overall Width	Front width :200mm
Wheelbase length	: 210mm		Rear width :200mm
Weight Chassis only	: 400g		

Cap

	M3×4	SGJ304
	M3×6	SGJ306
	M3×8	SGJ308
	M3×10	SGJ310
	M3×12	SGJ312
	M4×16	SGJ416
	M4×30	SGJ430

Cap screw

	M2×6	SG206
	M2.5×8	SG2.5×8
	M3×8	SG308
	M3×12	SG312

Screw

	M2.5×4	SIG2.54
	M3×4	SIG304
	M3×6	SIG306
	M3×8	SIG308
	M3×10	SIG310

Grub screw

	M3×3	SK303
	M3×8	SK308
	M3×10	SK310

E-Ring

	E-Ring 2.0	OE-E2.0
--	------------	---------

Lock nut

	M4	SN-M4-F
	M3	SN-M3-F
	M3	SN-M3

Ball bearing

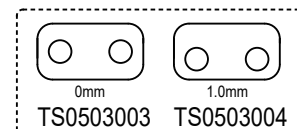
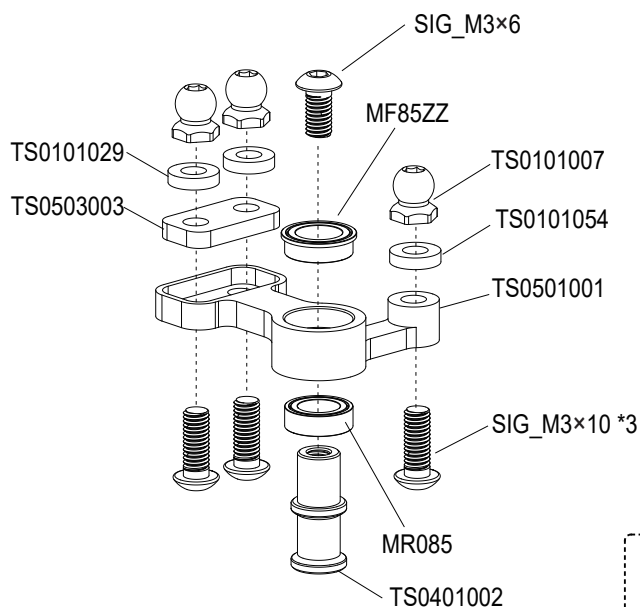
	6.35×9.525×3.175	FR168ZZ
	6.35×9.525×3.175	R168-2RS
	3×8×3.5	F3-8M



① ~ ④
Kit Bag A

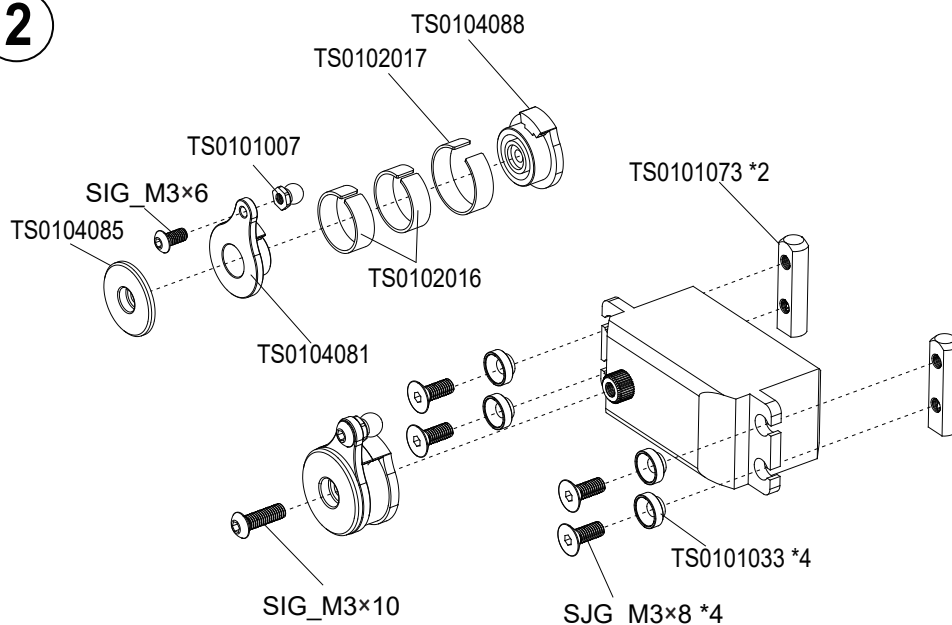
	TS01010073
	TS01010292
	TS01010541
	SIG_M3x61
	SIG_M3x103
	MR0851
	MF85ZZ1

①



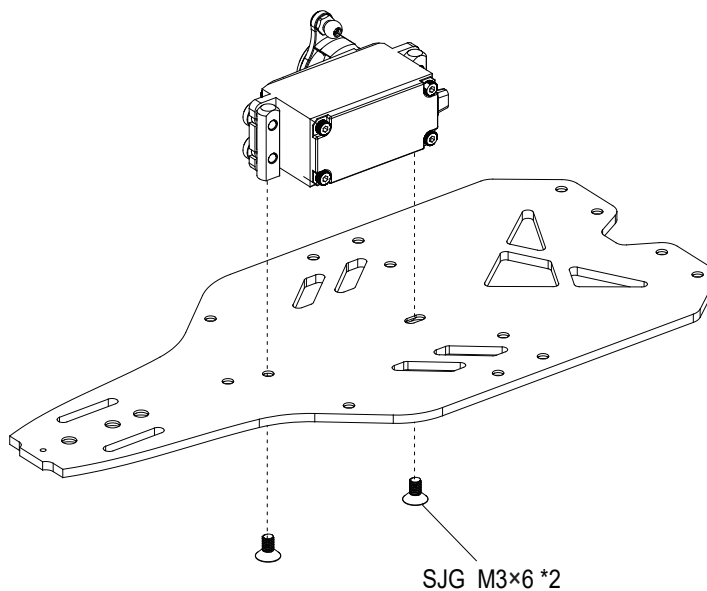
	TS01010732
	TS01020171
	TS01020162
	SIG_M3x101
	SJG_M3x84
	SIG_M3x61
	TS01010334

②



	SJG_M3x62
--	----------	--------

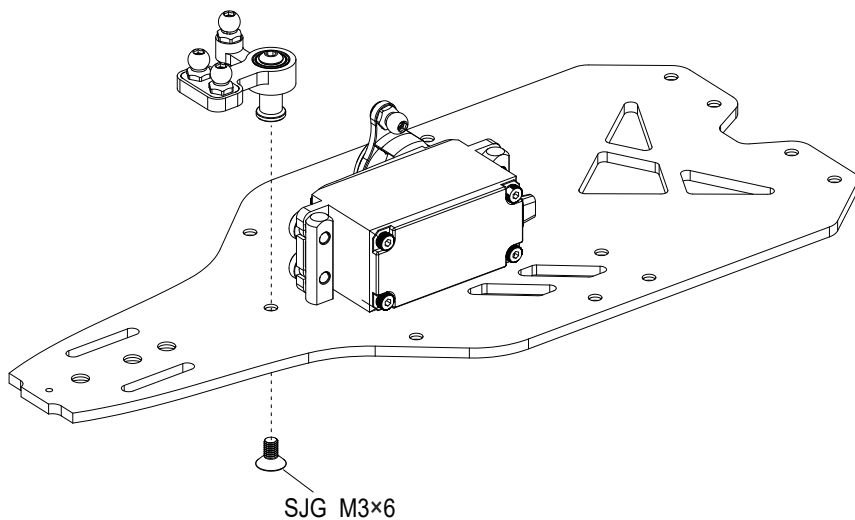
③





SJG_M3x61

4



⑤ ~ ⑪
Kit Bag B



TS01020152



TS01010072



SIG_M2.5x42



SIG_M3x102

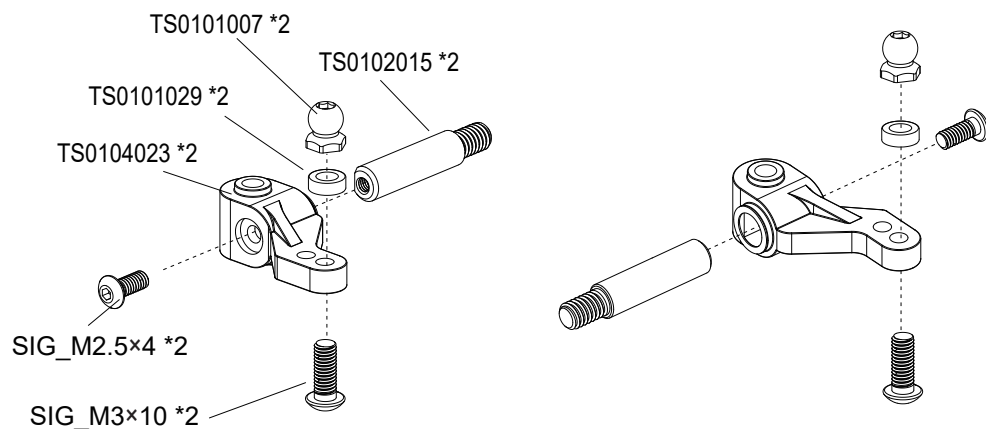


TS01010292



TS01040232

5

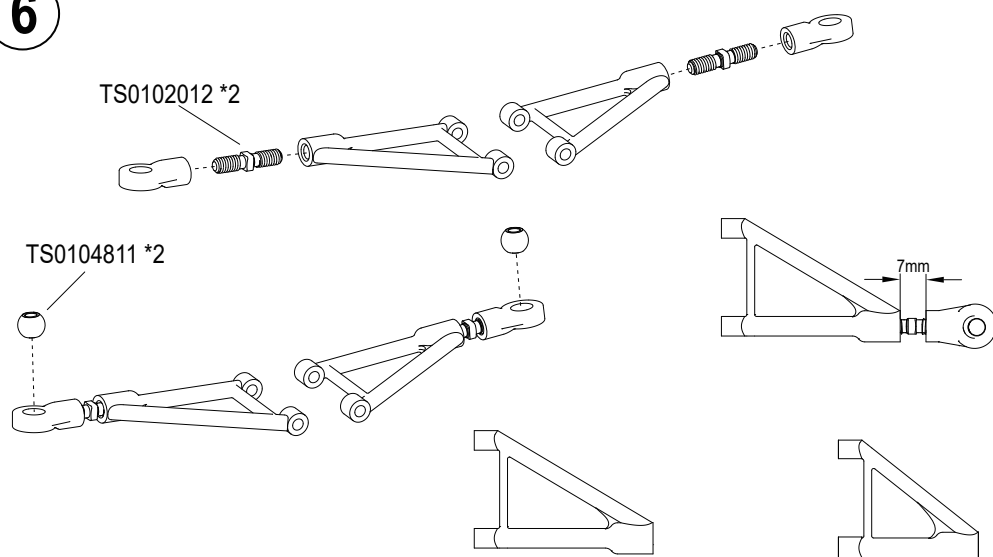


TS01020122



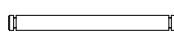
TS01048112

6



F1-013-1-P(use on F1-200)

F1-013-2-P(use on F1-180)

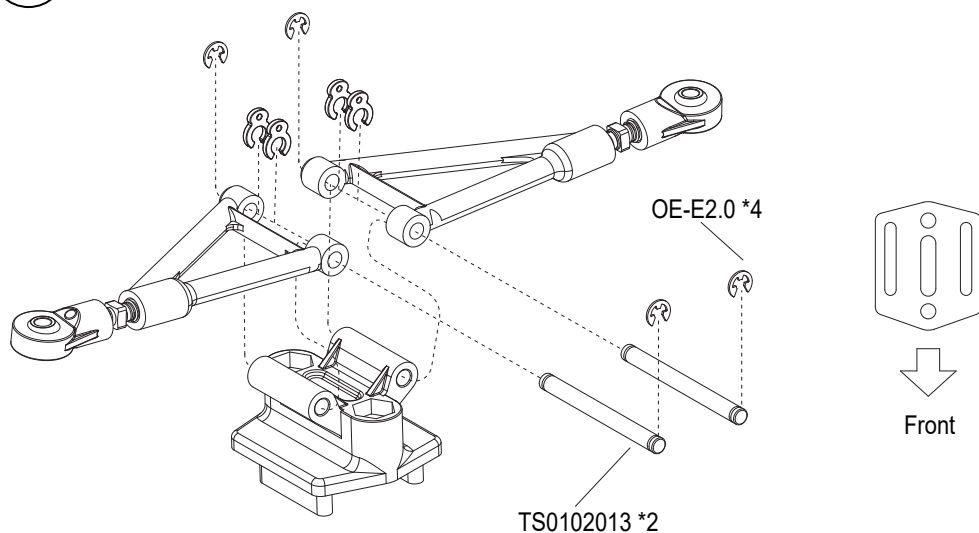
 (33.6mm)

TS01020132

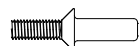


OE-E2.04

7



TS01048122



TS01028072



SJG_M3x102

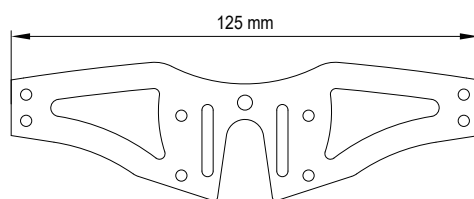
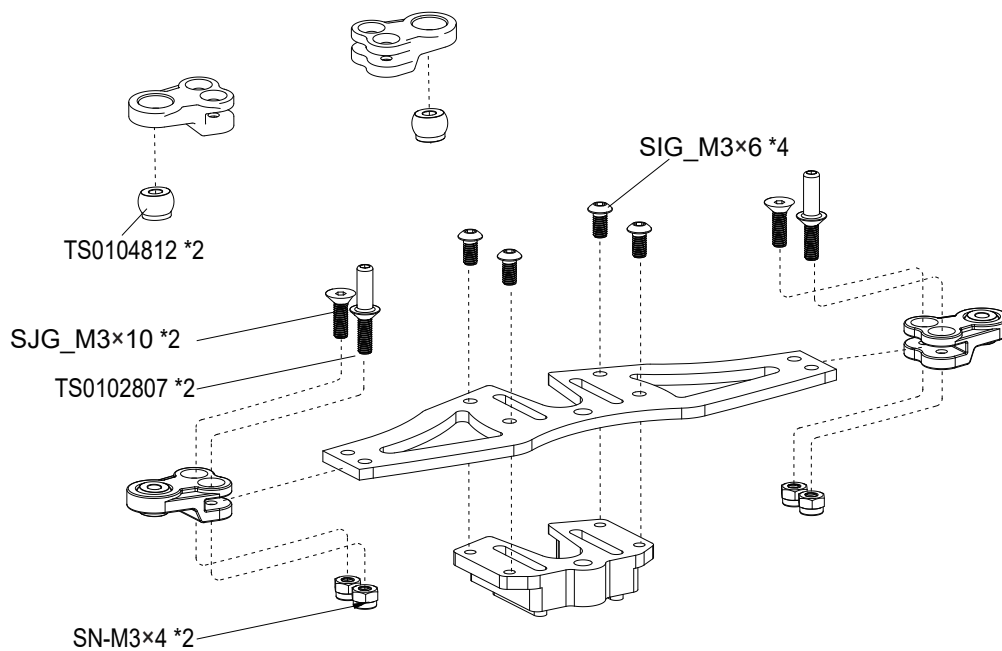


SN-M34

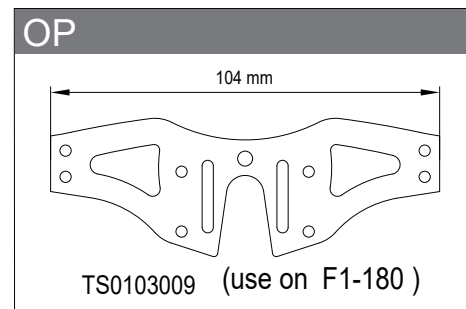


SIG_M3x64

8



TS0103010 (use on F1-200)





(31mm)

TS01020072



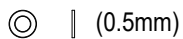
TS01010302



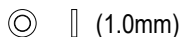
OE-E2.04



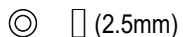
TS01020032



TS01010262

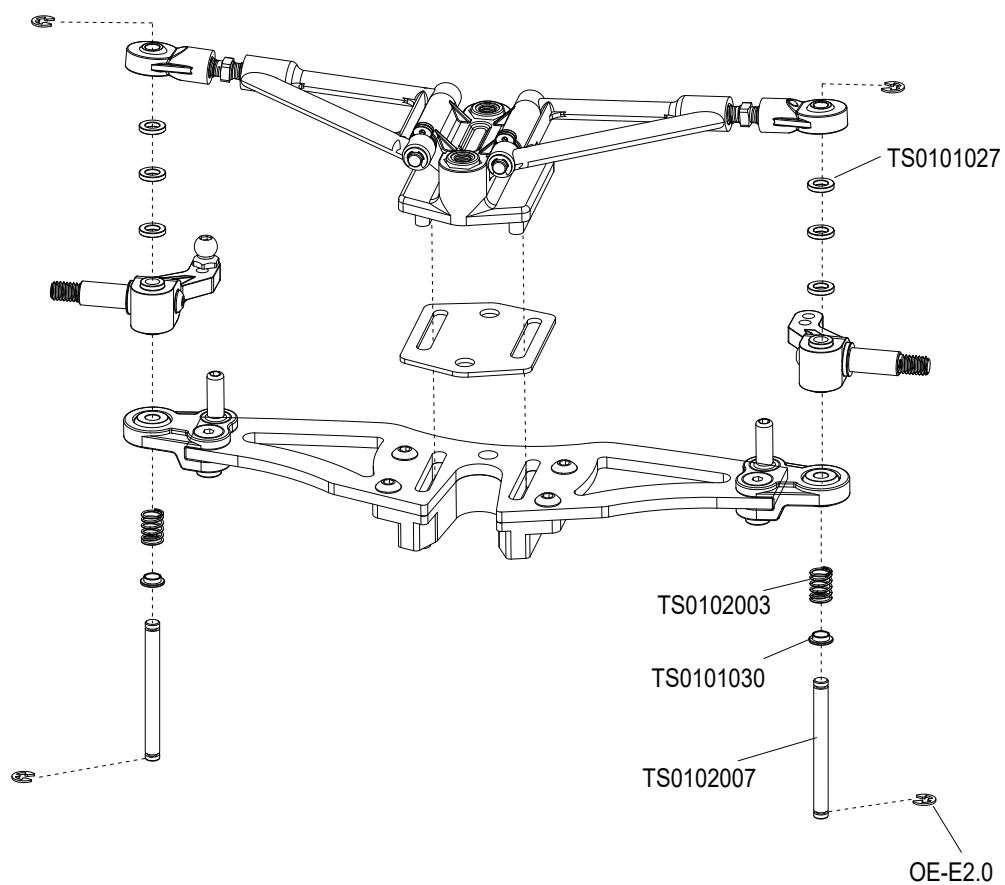


TS01010272



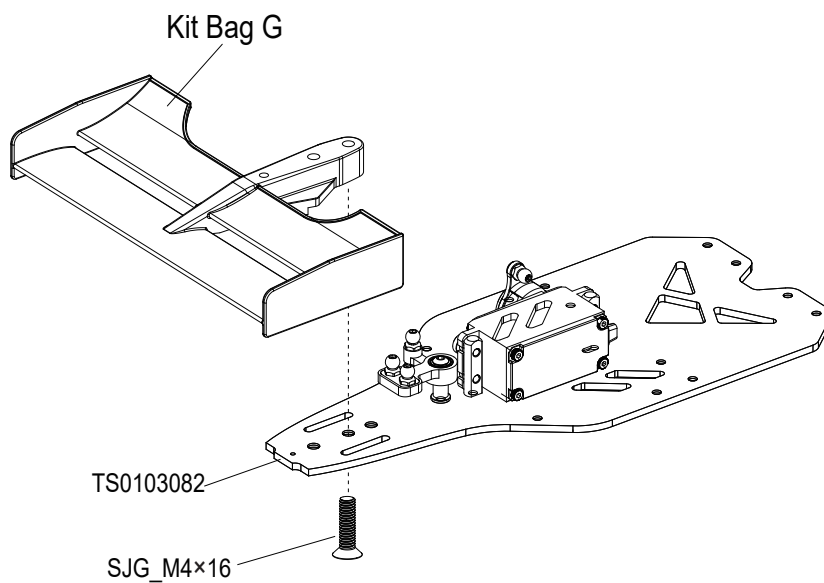
TS01010292

9



SJG_M4x161

10



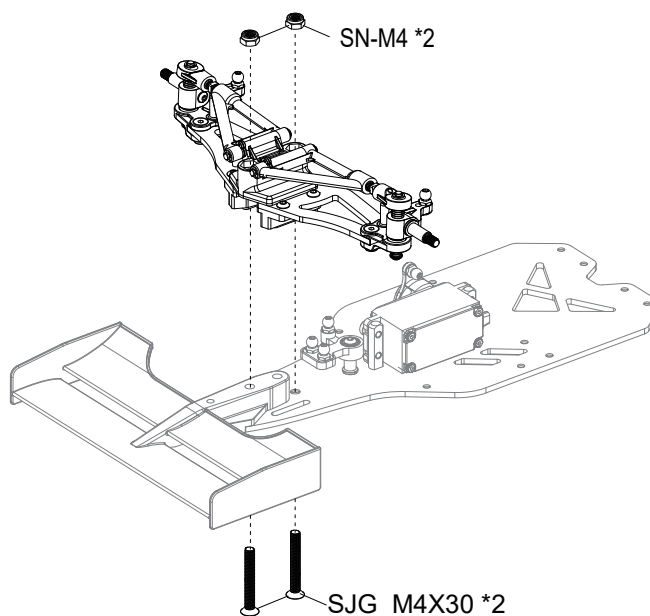


SJG_M4x302



SN-M42

11



12 ~ 15
Kit Bag C

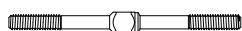
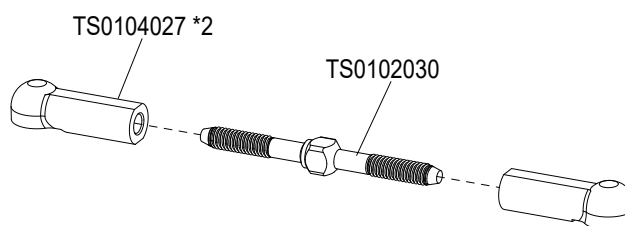
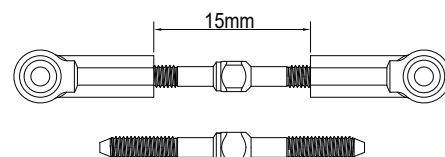
(L=25mm)

TS01020301

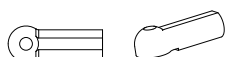


TS01040272

12

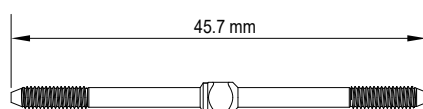
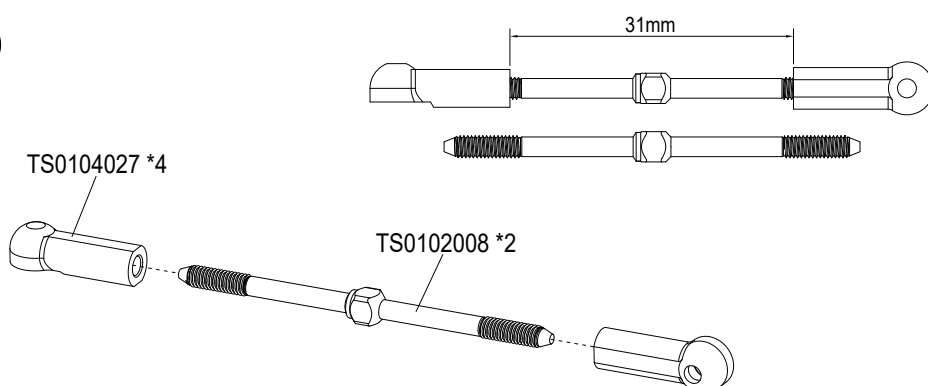


TS01020082



TS01040274

13



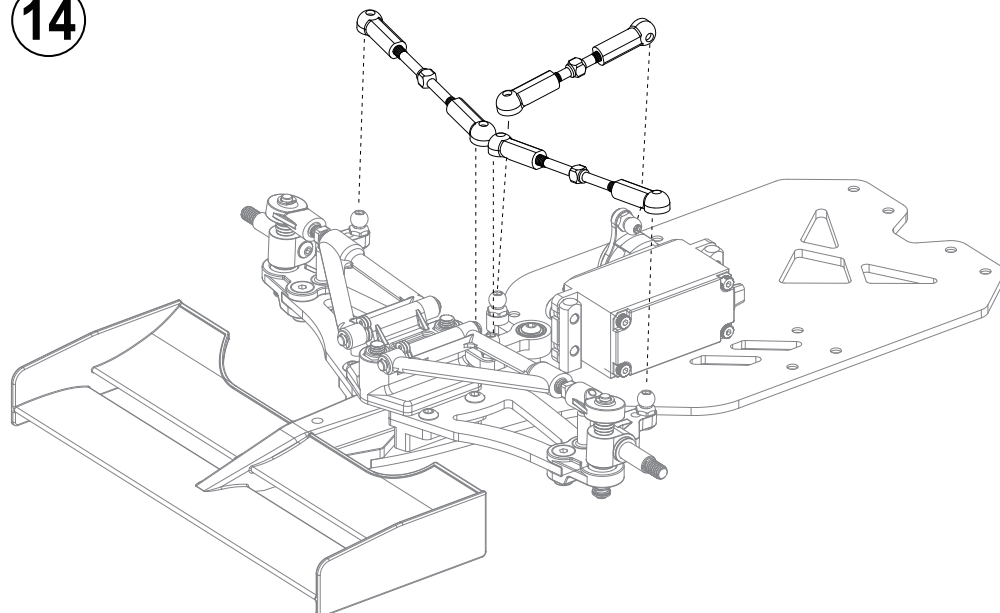
TS0102008 (use on F1-200)

OP

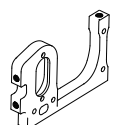


TS0102013 (use on F1-180)

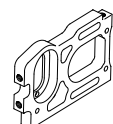
14



15



TS01010211

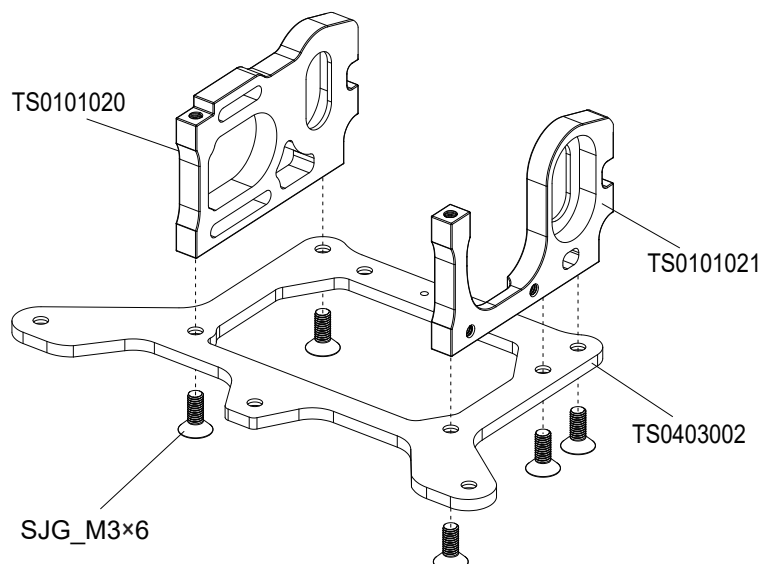


TS01010202



SJG_M3x65

TS0101020



TS0101021

TS0403002

SJG_M3x6

16



16 ~ 24
Kit Bag D



TS01020101



SG_M2x62

Hex wrench (1.5mm)

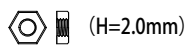
★ Do not over tighten.

SG_M2x6

TS0104039

TS0102010

TS0104040



TS02010312



SJG_M3×61

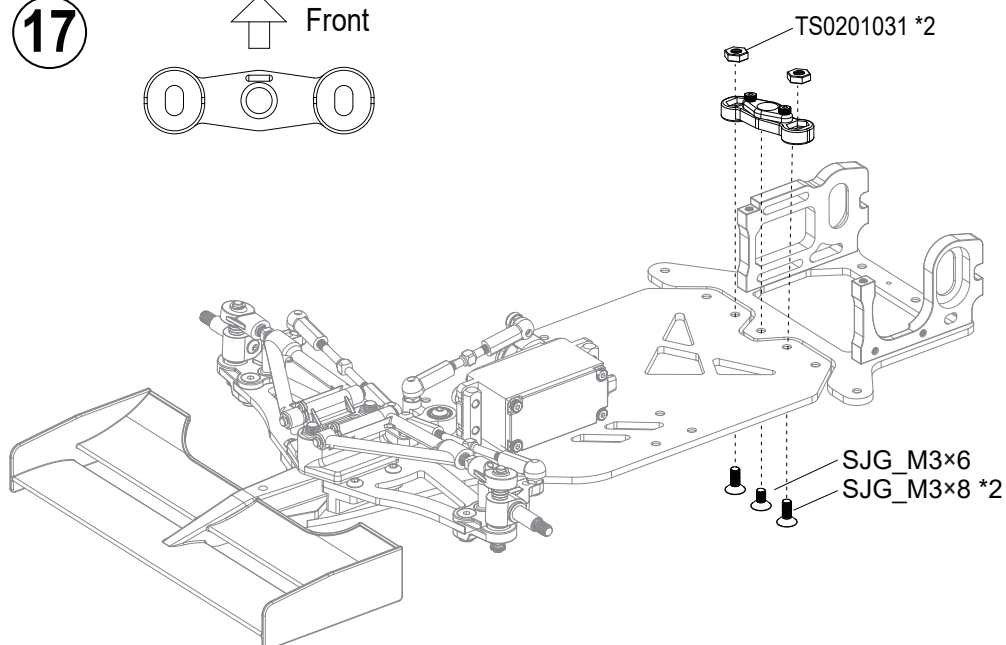
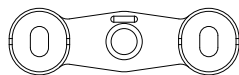


SJG_M3×82

17



Front



TS01020104

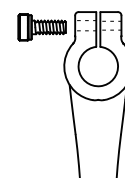


SG_M2×64

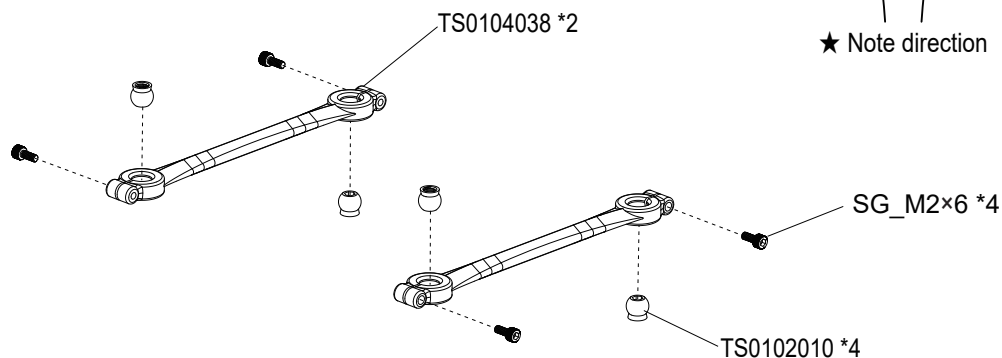
18

Attaching lower brace

★ Do not over tighten.

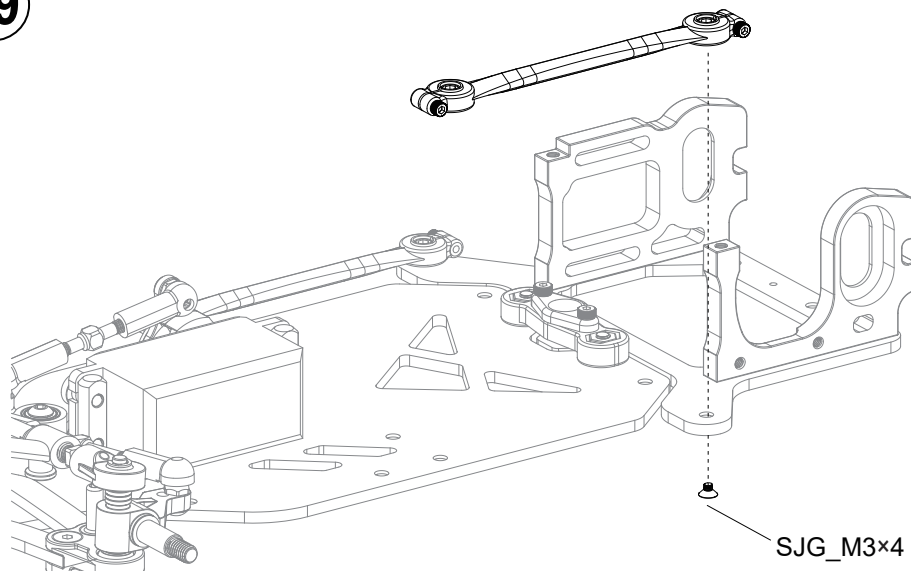









★ Note direction



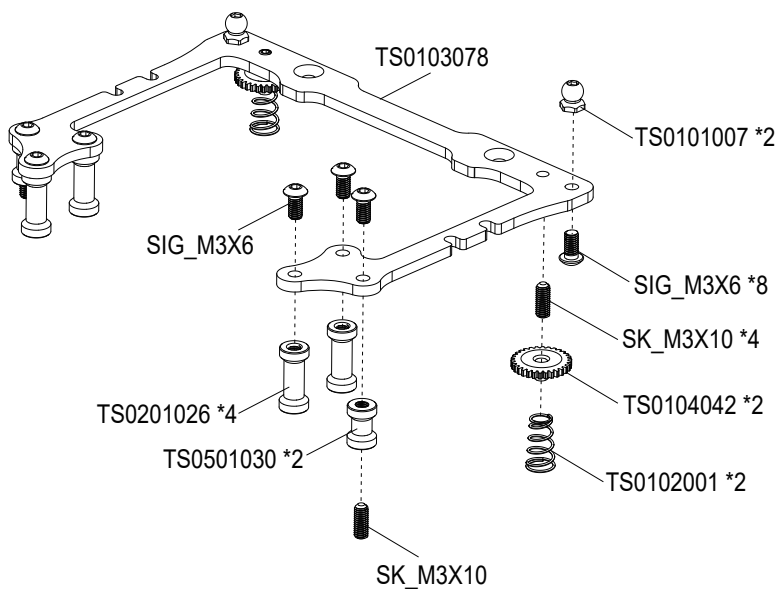
SJG_M3×42

19



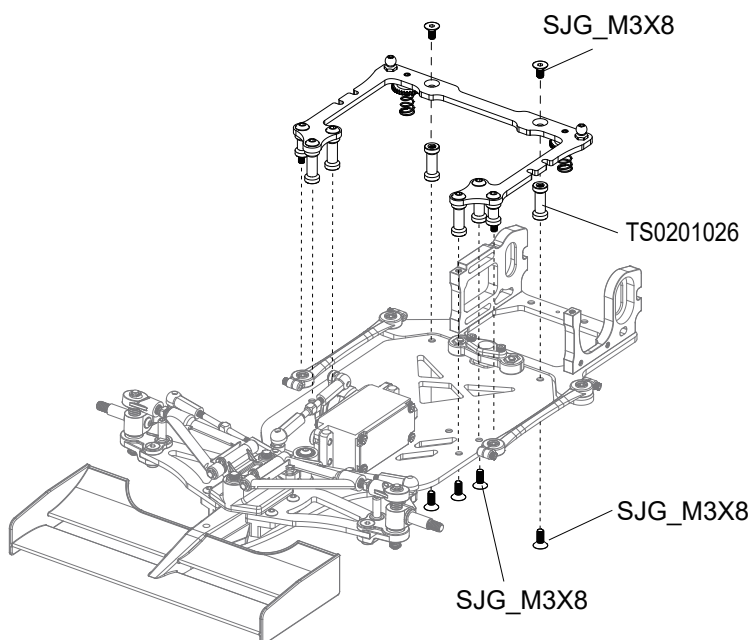
	TS01010072
	TS01020012
	TS01040422
	SIG_M3X68
 L=15mm	TS02010264
 L=9.6mm	TS05010302
	SK_M3X104



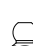

20



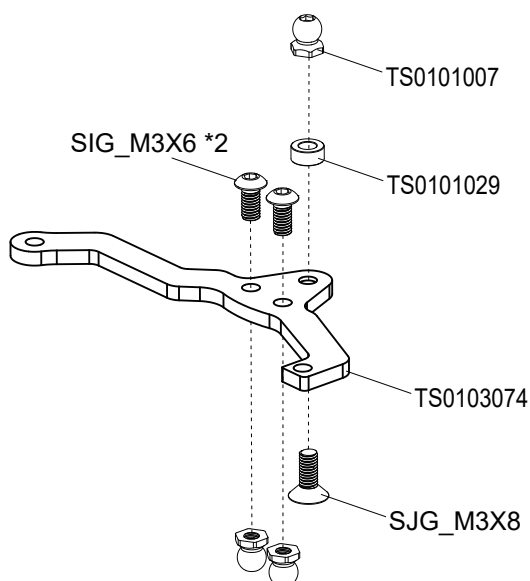
	TS02010262
	SJG_M3X88

21



	SIG_M3X62
	SJG_M3X81
	TS01010073
	TS01010291

22

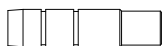




TS01040264



SK_M3×102

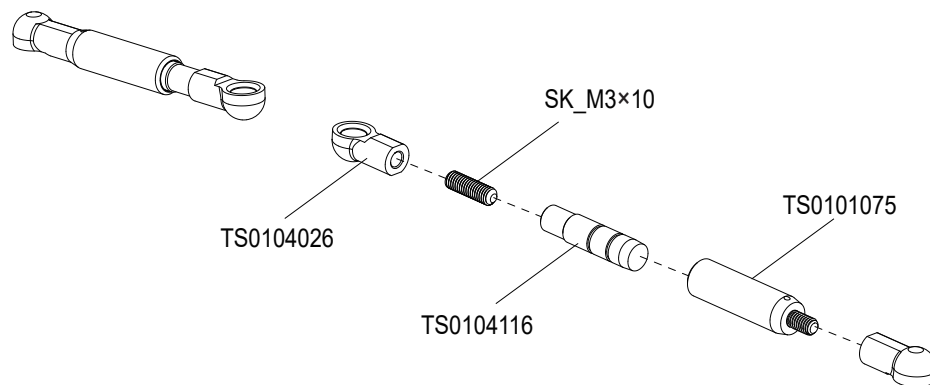


TS01041162



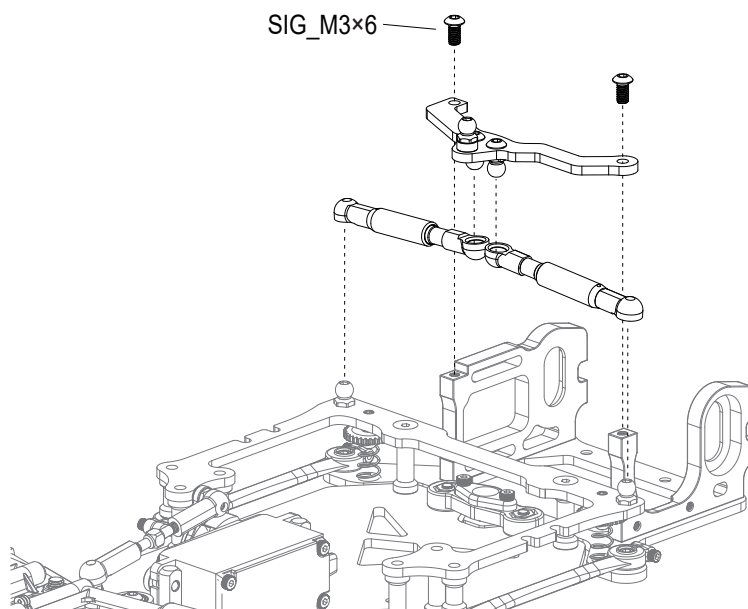
TS01010752

23



SIG_M3×62

24



25 ~ 27
Kit Bag E



TS01023-11



TS01010021

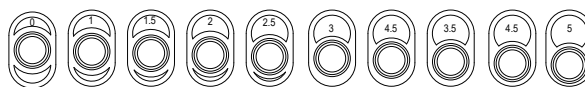


FR168ZZ3

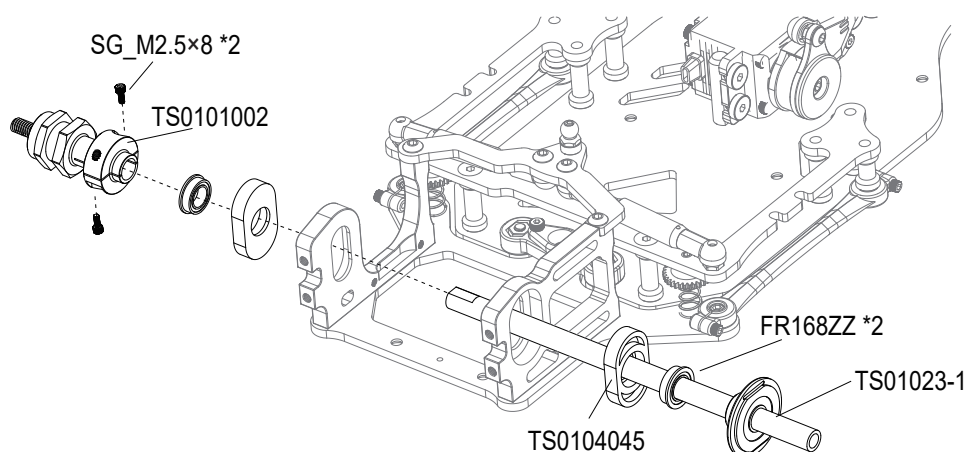








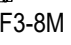

SG_M2.5×81

25

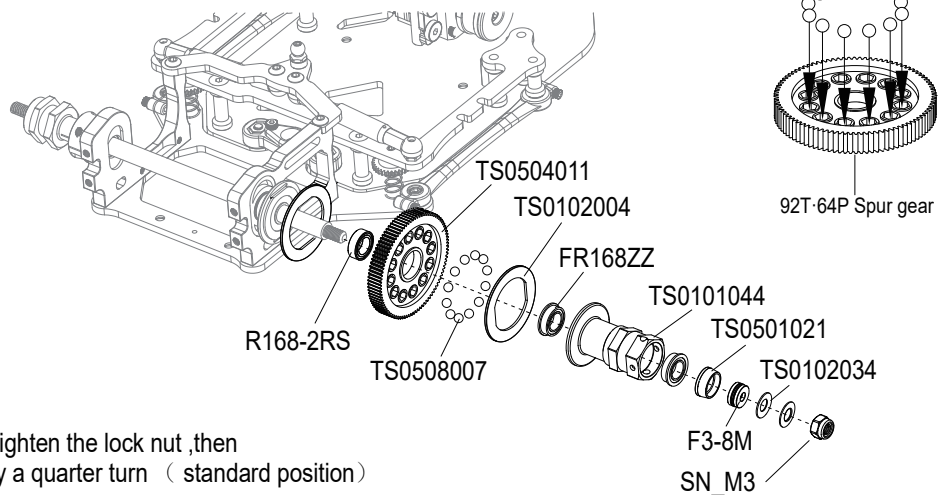



★ These eccentric bushings adjust the RIDE HEIGHT of the rear pod.
Make sure to use the SAME eccentric bushings on BOTH sides.



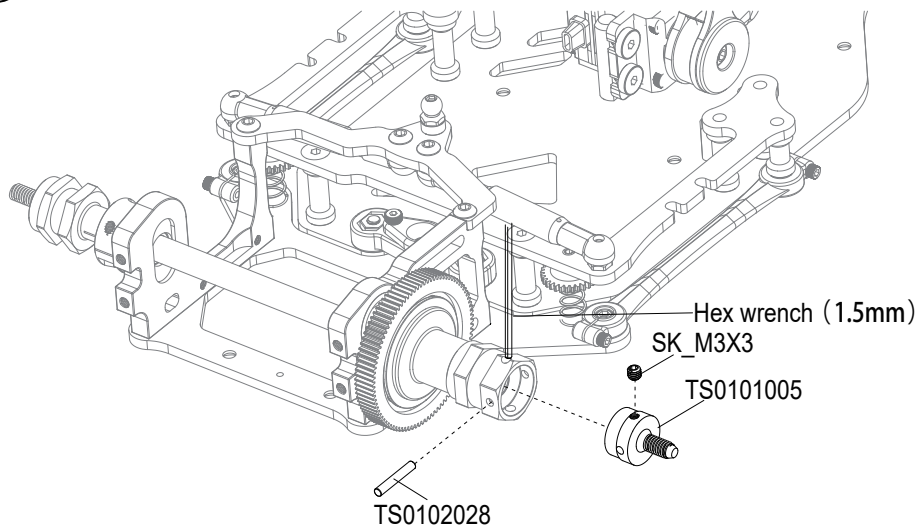
	TS05010211
	TS01020042
	R168-2RS1
	FR168ZZ2
	TS01020342
	SN_M31
	F3-8M1
	TS01010441

26

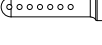





	TS01010051
	TS01020281
	SK_M3X31

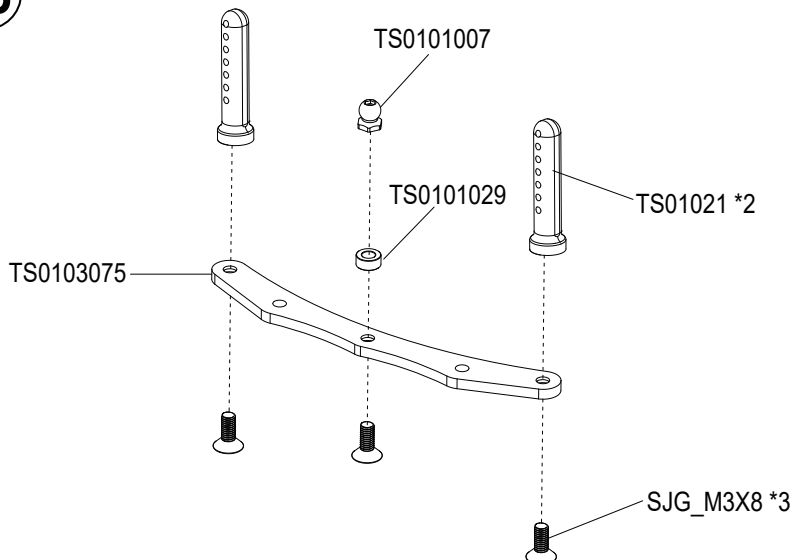
27

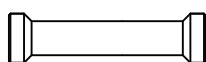
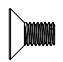



28 ~ 33
Kit Bag F

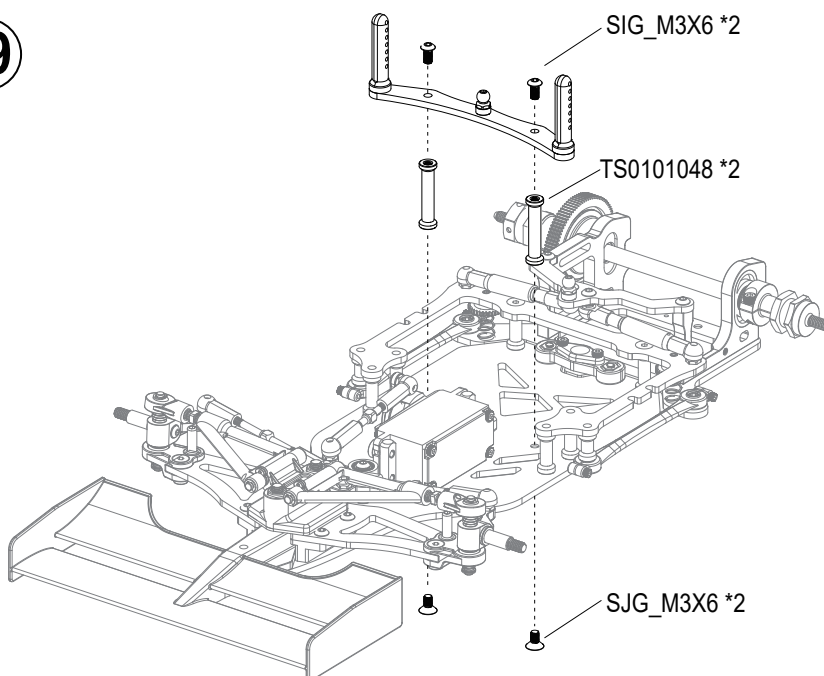
	TS010212
	TS01010071
	SJG_M3X83
	TS01010291

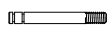





28



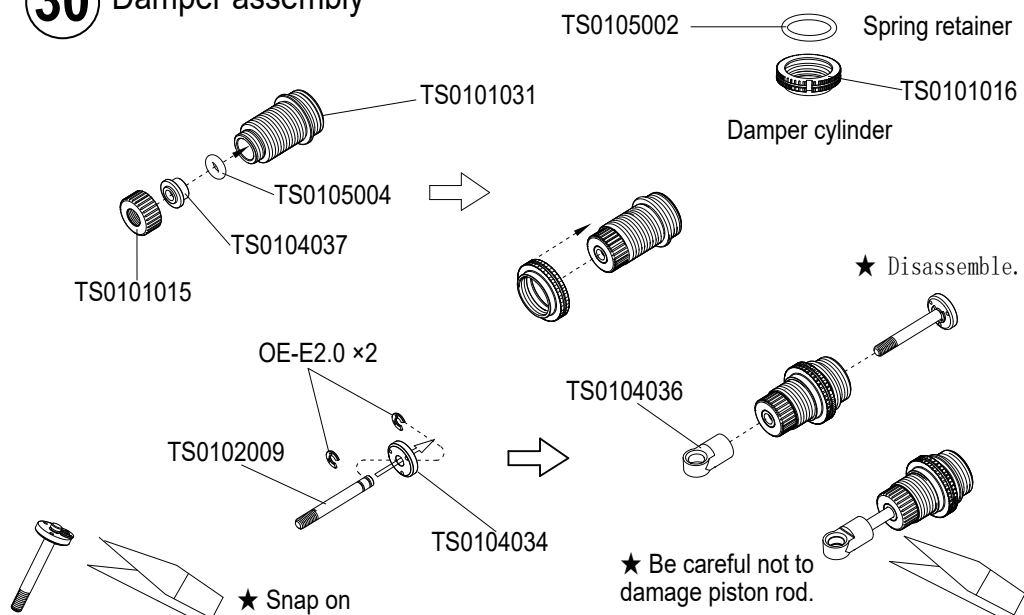
	L=26mm
TS01010482
	
SJG_M3X62
	
SIG_M3X62


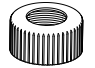
29



	
TS01020091
	
TS01040341
	
TS01040371
	
TS01050021
	
TS01050041
	
OE_E2.02

30 Damper assembly



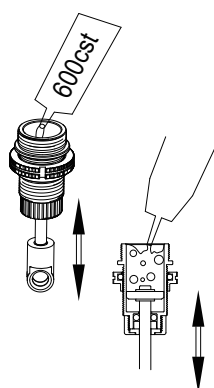
	
TS01050011
	
TS01010071

31 Damper oil

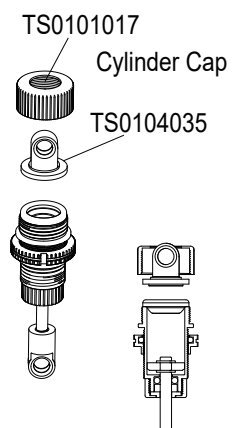
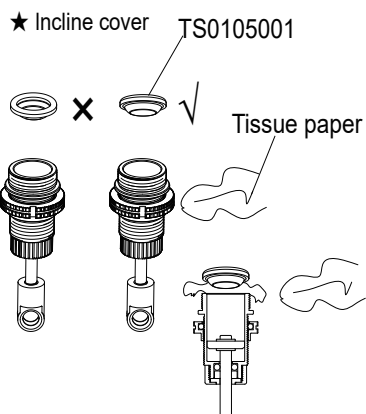
1.Pull down piston and pour oil into cylinder .Remove air bubbles by slowly moving piston up and down.

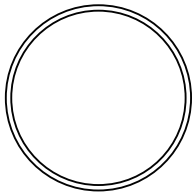
2.Pull down piston, attach oil seal and absorb oil overflow with tissue paper.

3.Tighten cylinder cap.



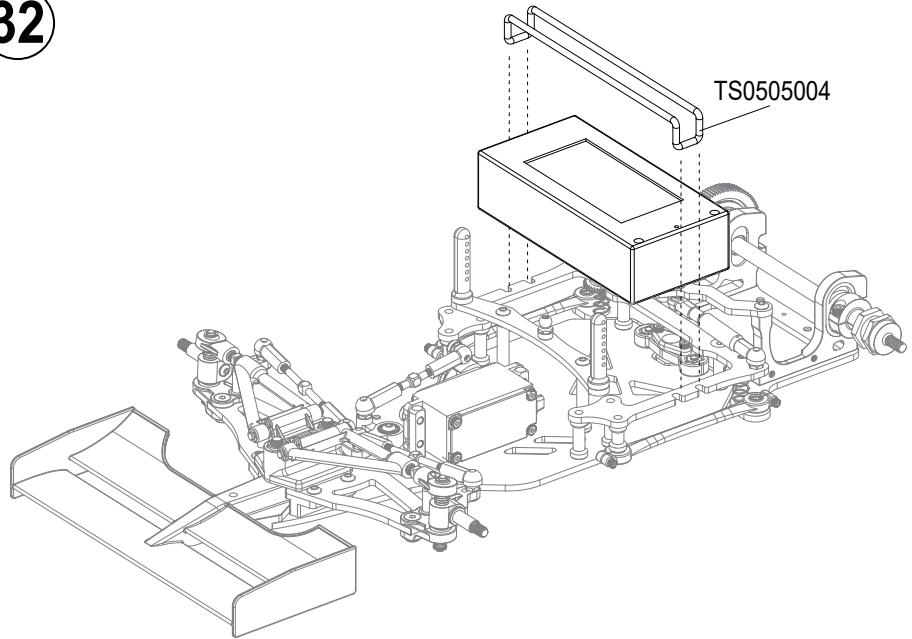
★ Move slowly.





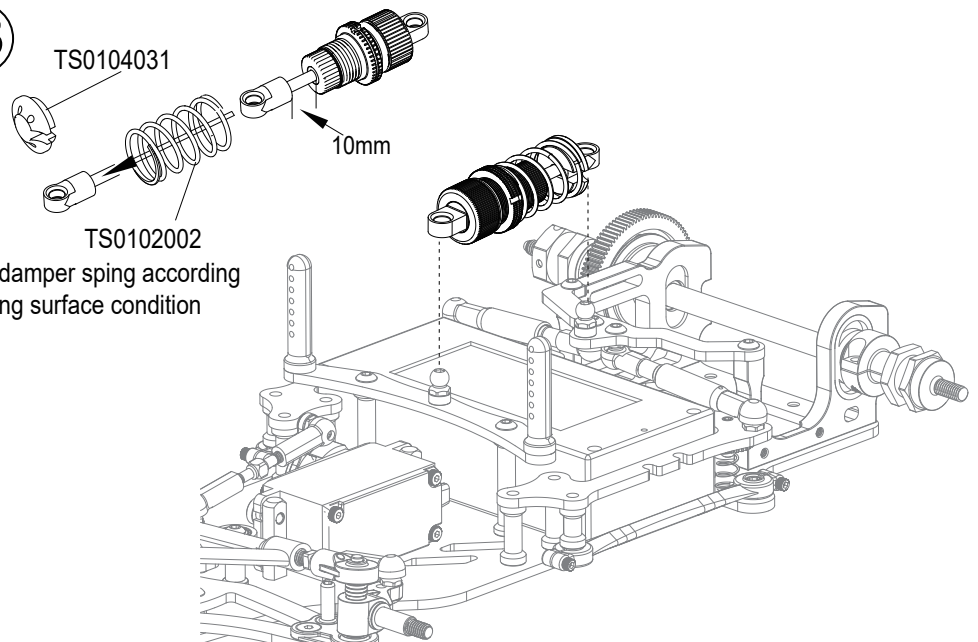
TS05050041

32



TS01020021

33

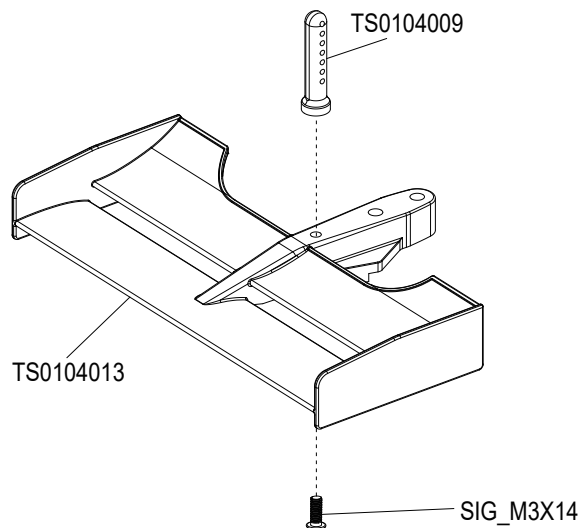


34 ~ 41
Kit Bag G



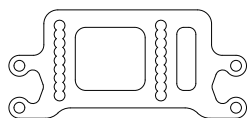
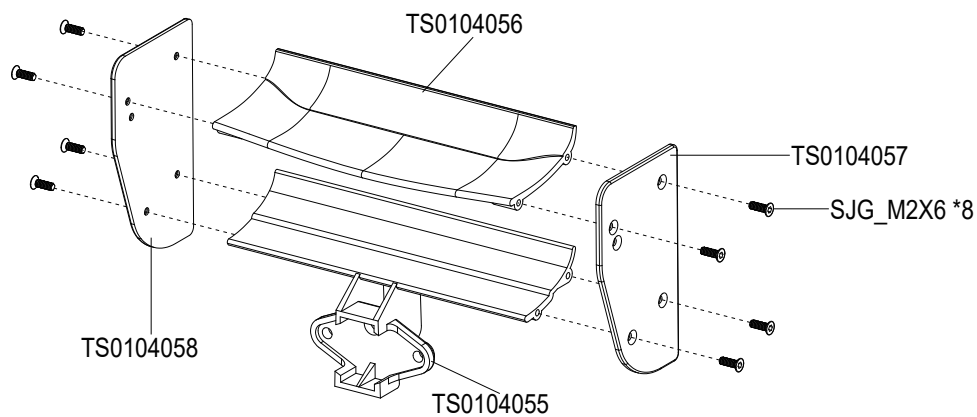
SIG_M3X141

34



 SJG_M2X68

35



TS01030071



TS01040602

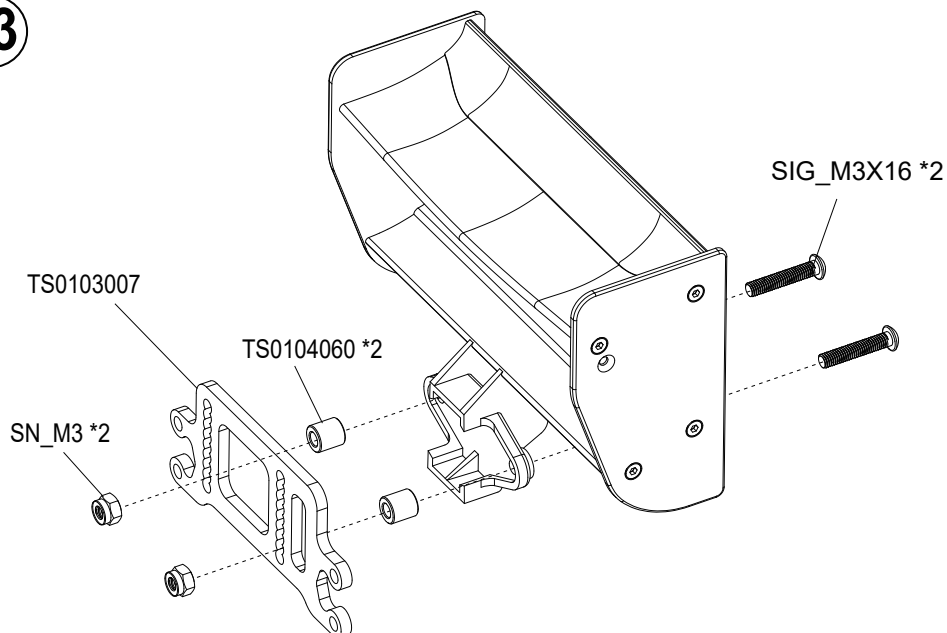


SN_M32



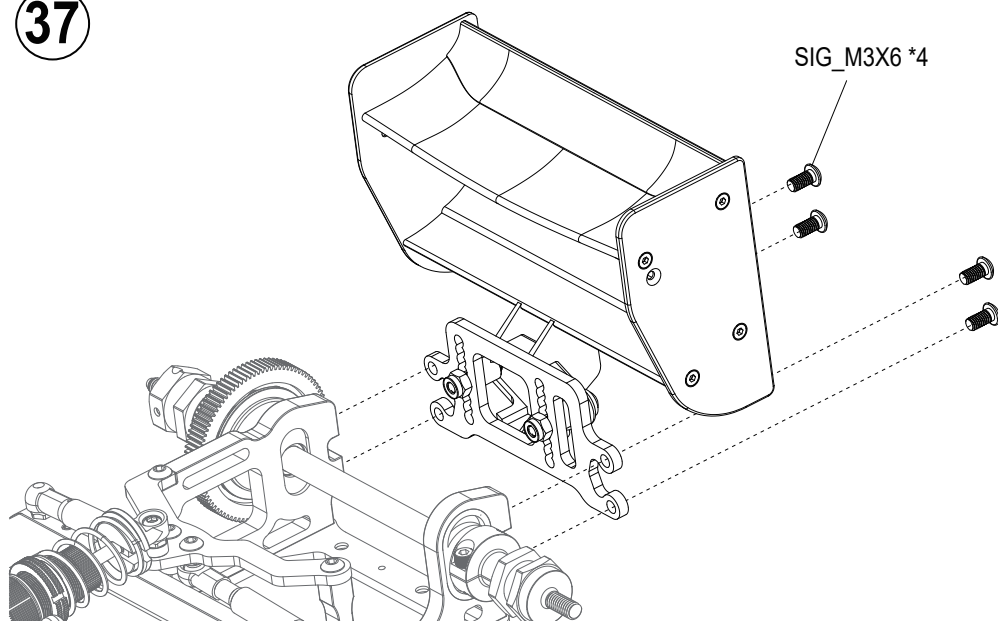
SIG_M3X162

33



 SIG_M3X64

37



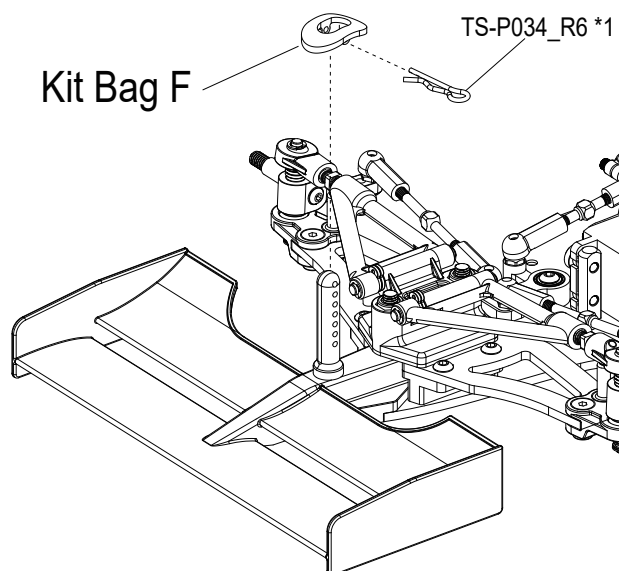


TS01040031



TS-P0341

38



TS01040032

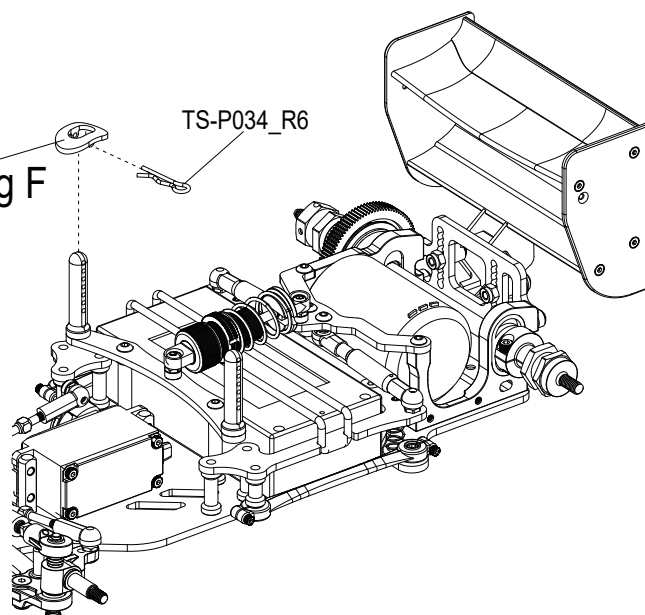


TS-P0342

39

Kit Bag F

TS-P034_R6



SN_M42

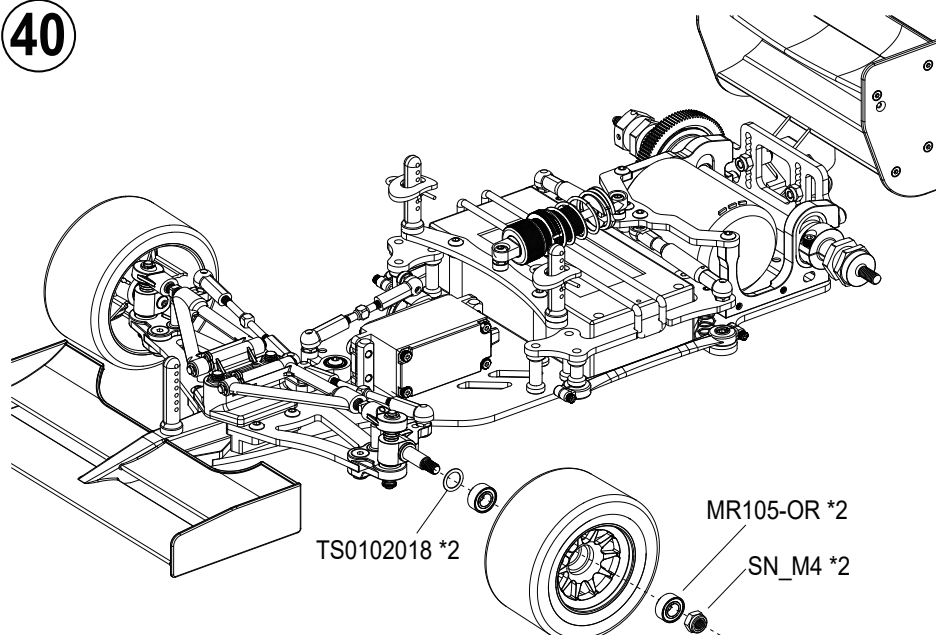


TS01020182



MR105-OR4

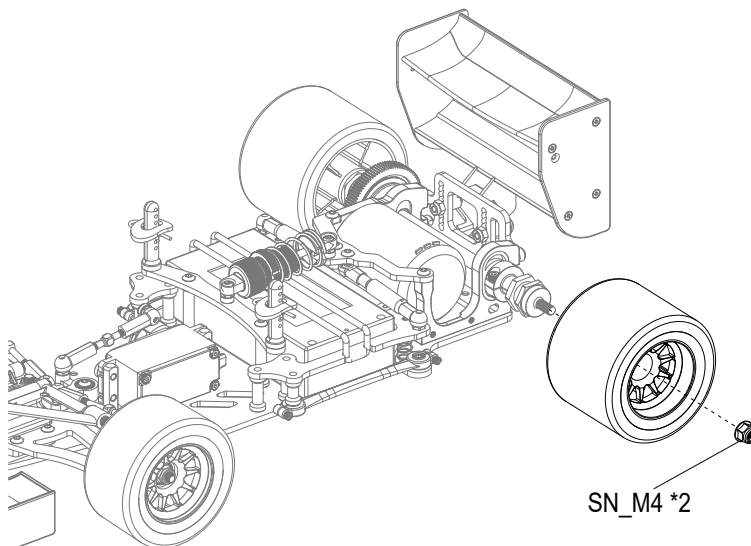
40





SN_M4-F2

41



SETTING - UP

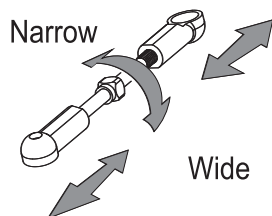
- Record various running conditions and settings on the setting sheet.

TOE-IN AND TOE-OUT

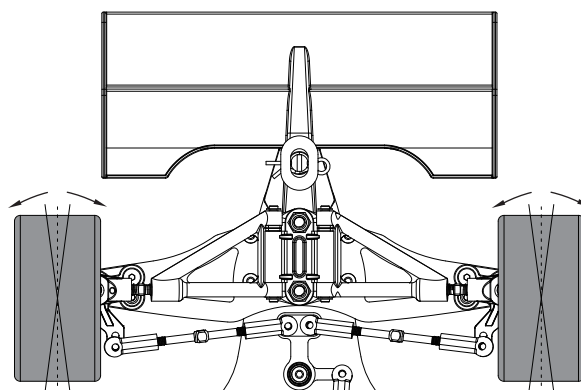
Toe-in and toe -out

★Adjust rod length by rotating adjuster.

★Make sure the servo is in neutral.



★Adjust according to the track layout.

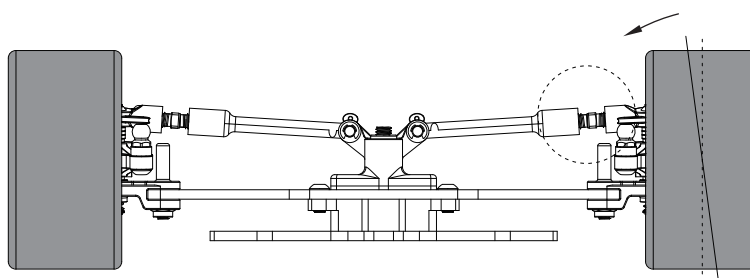
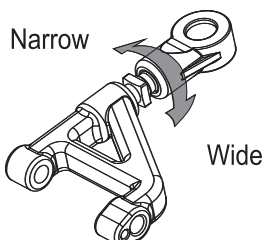


CAMBER ANGLE

Camber angle



★Adapt for the draw bar to adjust camber angle.

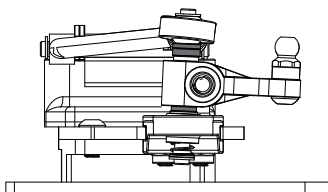


GROUND CLEARANCE

★ Ground clearance can be altered according to wheel diameter,etc.

Front

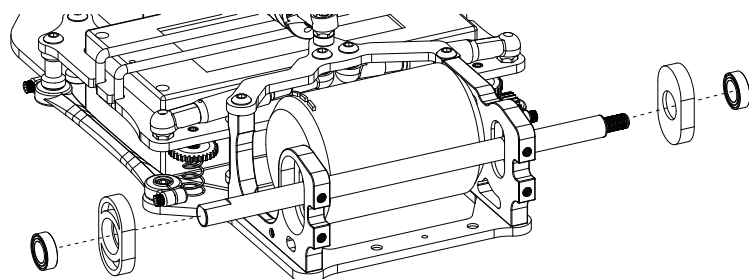
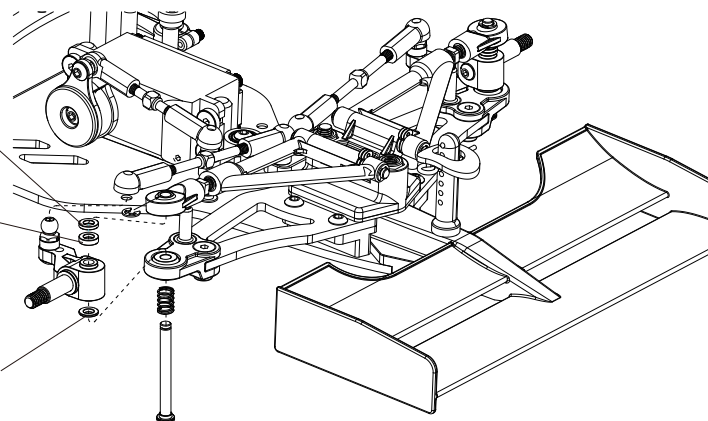
★ Adjust by altering
TS0101026 (0.5mm)
TS0101027 (1.0mm)
TS0101029 (2.5mm)



TS0101026
(0.5mm)

TS0101029
(2.5mm)

TS0101026
(0.5mm)



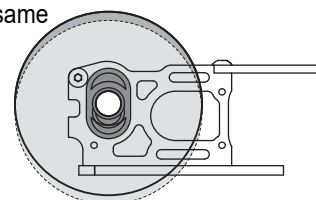
TS0104045 TS0104046 TS0104047 TS0104048 TS0104049



TS0104050 TS0104051 TS0104052 TS0104053 TS0104054



★ Use spacers of the same offset for the right and left, and make sure the shaft is horizontal.



VAPOR INDUSTRIAL CO., LTD
Http://www.saxoracing.com
E-mail:saxo@saxoracing.com



MF-1-200

RS

TEAM SASHO RACING